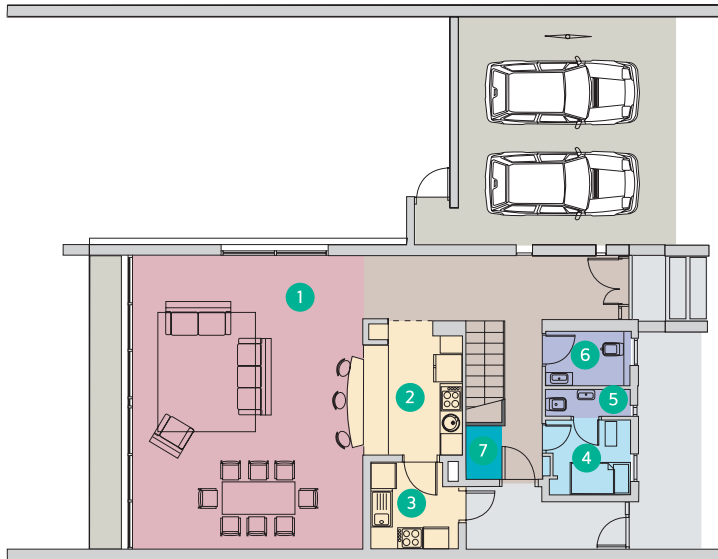




# TRADITIONAL LUXURY 500m<sup>2</sup> (ATL)



## Ground Floor



A three bedroom villa with a single open plan reception room on the ground floor and three large ensuite bedrooms and a sun terrace on the first floor.

A working kitchen and a maid's room are provided with separate entrance and there is a covered parking area for two cars.

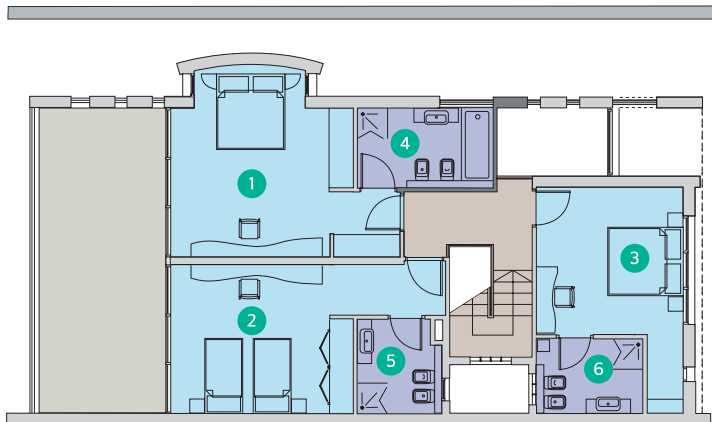
The villa will be finished to a very high standard including all floor and wall surfacing, bathroom fittings, central air conditioning and a fully fitted front kitchen.

### TYPE A VILLA

#### TRADITIONAL LUXURY 500M<sup>2</sup>

Ground Floor Legend	Width (m)	Depth (m)
1. Living/Dining Room	6.20	8.00
2. Front Kitchen	2.70	3.70
3. Rear Kitchen	2.40	2.40
4. Maid Bedroom	2.00	2.00
5. Maid Bathroom	2.00	0.80
6. Guest Bathroom	2.30	1.50
7. Store Room	1.00	2.00

## First Floor



First Floor Legend	Width (m)	Depth (m)
1. Master Bedroom	4.20	3.90
2. Bedroom 2	4.10	3.90
3. Bedroom 3	4.00	4.00
4. Master Ensuite	3.70	2.00
5. Ensuite 2	2.40	2.20
6. Ensuite 3	2.80	2.00

Note: All Traditional Luxury villas are located on the Petal Islands on plots of approximately 500m<sup>2</sup>.

